



Waterproofing

Guaranteed solutions to provide water-tight structures and tunnels



Global Construction Chemicals

- ▶ Integral Treatments
- ▶ Construction & Movement Joint Systems
- ▶ Surface-applied Penetrative Treatments
- ▶ Liquid-applied Coatings/Membranes
- ▶ Sheet Membranes
- ▶ Water Plugging

normet
FOR TOUGH JOBS

Waterproofing

Leak Sealing

Ground Stabilization

Concrete Admixtures

Construction and Repair

Tunnelling and Mining

Equipment



Specialists in structural
waterproofing and
concrete protection *



* TAM also manufactures a wide range of injection materials for leak sealing
- refer to the TAM brochure - 'Leak Sealing' or visit -

www.taminternational.com



TAM stops water

A package of solutions guaranteed to waterproof all types of structures, foundations and tunnels ...

TAM International is a world leader in waterproofing products used for building, civil engineering, basements and tunnelling.

TAM is more than simply a manufacturer. We provide comprehensive solutions - "from the deepest foundations to the roof". Wherever water needs to be stopped or retained, TAM has a product or a system to do it.

With over 25 years of continued investment in all aspects of waterproofing, TAM's portfolio of solutions is second to none.



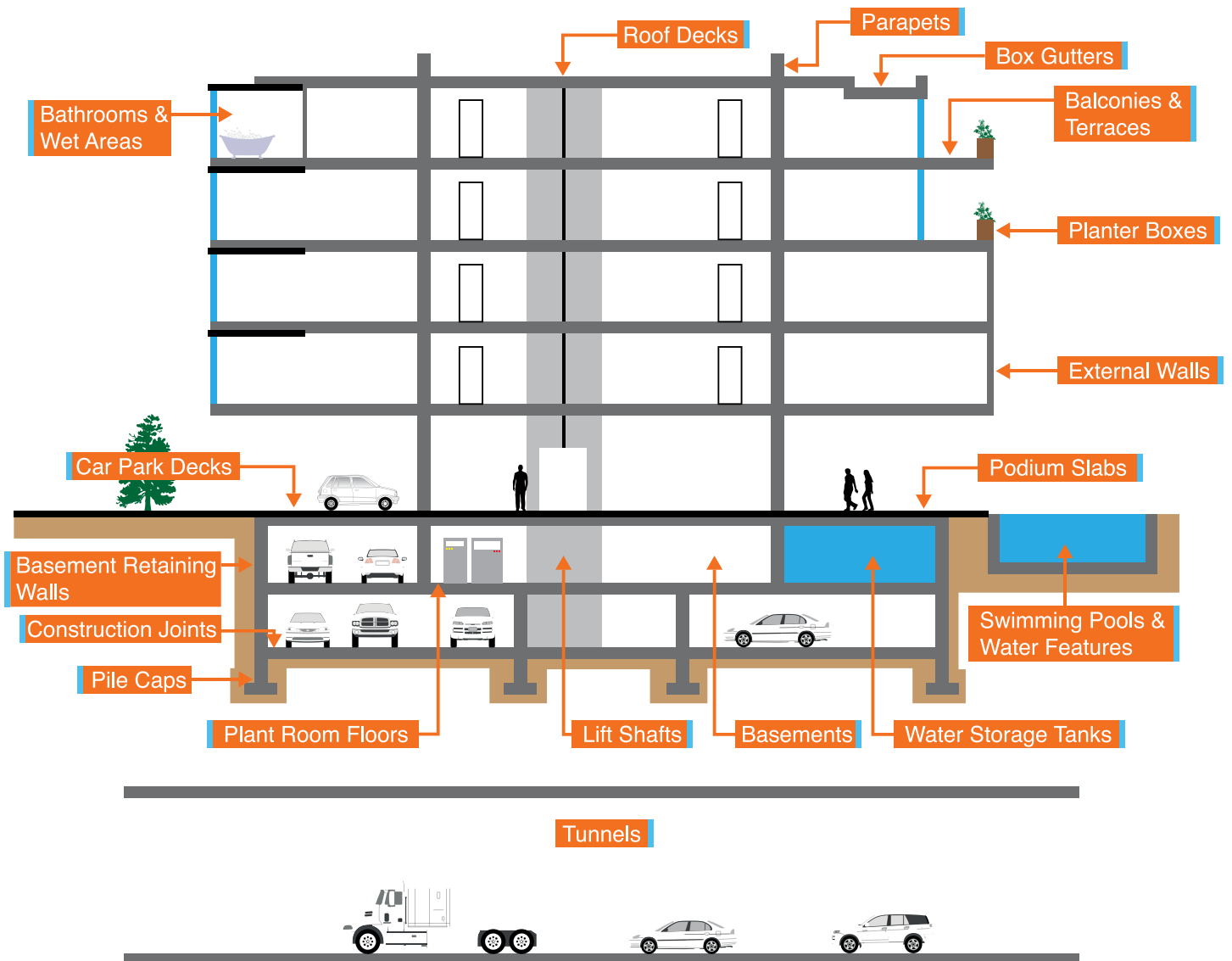
**Integral Treatments · Construction & Movement Joint Systems ·
Surface-applied Penetrative Treatments · Liquid-applied Coatings/Membranes ·
Sheet Membranes · Water Plugging**

TAM manufactures a complimentary range of leak sealing and crack injection materials - refer to the TAM brochure - 'Leak Sealing' or visit www.taminternational.com

TAM's goal? To supply the highest quality innovative solutions, together with market leading technical support to its valued customers everywhere.



▷ Waterproofing Application Areas





▷ Integral Treatments

Admixtures for use in fresh concrete and mortar mixes, and formulations to treat capillaries and seal concrete through a process of crystallization.

Waterproofing admixtures

All concrete benefits when capillary absorption can be reduced. This is most effectively accomplished where pore-blocking admixtures, or admixtures that cause the formation of catalytic crystalline growth, are used at the time of concrete production.

TAM offers technical advice on the most effective mix designs.

Polymer additives

The characteristics of screeds, renders and mortars is significantly enhanced by the inclusion of polymer-based additives to impart cohesion, workability and plasticizing qualities.

Such mix designs form a reinforcing polymer matrix and provide greater chemical resistance and stability under adverse wet or alkaline conditions.

Injection systems

The phenomenon of rising damp is of particular significance in brick, masonry and stone structures and can cause unsightly staining and efflorescence.

The injection of TamSil 190 will create a bonded hydrophobic lining to the pores of the substrate and significantly reduce the absorption of water and water-borne contaminants.

Surface-applied systems for concrete slabs

TamSeal DS is applied by a 'dry-shake' method, curing to become an integral part of the concrete itself. It enhances resistance to hydrostatic pressure, seals hairline cracks and increases impact and abrasion resistance.

Always refer to individual Technical Data Sheets and Health and Safety Data Sheets for more detailed information.

Product Range

TamSeal Admix
TamSeal Hydroproof



Product Range

TamSeal Acryl
TamSeal SBR

Product Range

TamSil 190

Product Range

TamSeal DS





▷ Construction & Movement Joint Systems

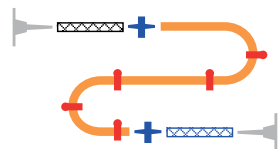
TAM specialises in the treatment and waterproofing of concrete joints. Its re-injectable tube system delivers water-stopping grouts and gels to critical locations beneath concrete surfaces, while its hydrophilic waterstops and joint treatments provide multiple solutions.

Re-injectable tubing

Failed construction joints in concrete are extremely costly to repair, often with less than perfect results.

Success or failure at these locations does not have to be left to chance. By 'designing-in' a re-injectable tube system, the entire area beneath a joint can be treated effectively at a future time (if necessary) - without the need for disruptive drilling.

Product Range
Tam Injection Tube RI



Joint sealing strips

Joints require care and attention if they are to act effectively and prevent the ingress of water. Tam surface-applied sealing strips and flexible epoxy-based sealants are suitable for joints and cracks.

Both are designed to accommodate continuous movement cycles.

Product Range
TamRez 440
TamRez HydroBand

Hydrophilic waterstops

TAM's range provides a wide choice of characteristics and 'swellability' to meet the requirements of all types of structures, including exposure to fresh water or seawater.

Pre-formed and gun-applied formulations are available, as well as a fully integrated hybrid product combining the traditional benefits of PVC with the latest innovations in hydrophilic technology. Very considerable hydrostatic pressures can be withstood.

Product Range
TamSeal BBR
TamSeal BR
TamSeal R
TamSeal SM
TamSeal CWS

Always refer to individual Technical Data Sheets and Health and Safety Data Sheets for more detailed information.



▷ Surface-applied Penetrative Treatments

These treatments have been designed to resist the ingress of water and water-borne contaminants. Some react with free-calcium to form a water insoluble calcium silicate hydrate, while others combine with free lime to form insoluble crystalline complexes within the surface matrix of the concrete.

By impregnation

TAM has a range of reactive treatments designed to be applied through flooding (of the horizontal surfaces) or by spray (on vertical surfaces). They penetrate the top layer of concrete, and reduce water permeability and water absorption. They seal incipient hairline cracks and existing cracks up to 2.0mm wide. Chloride diffusion and efflorescence are reduced and harmful water vapour can escape.

Product Range

TamSil 7
TamSil 290
TamSil 290WB

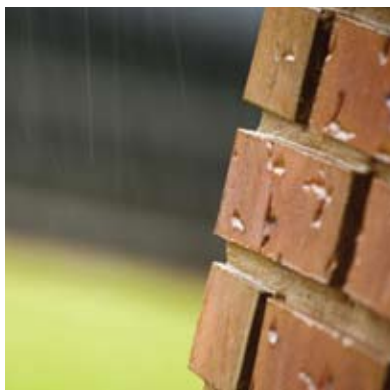
By crystallization

Permanent, in-depth concrete protection can be achieved through the process of crystallization. Active ingredients combine with free lime and any moisture present in the capillary tracts to form insoluble crystalline complexes. The penetration becomes deeper over a period of 28 days and the process will aid the sealing of cracks.

Product Range

TamSeal 20
TamSeal 30
TamSil 1
TamSil 7

Certain treatments in our range have potable water approval and can withstand water pressure greater than 12 bar. Harmful water vapour is able to escape.





▷ Liquid-applied Coatings / Membranes

Some concrete structures require more than just waterproofing, and may require additional protection for a variety of reasons. Whatever the circumstances, the TAM range of coatings and membranes can provide a solution for any job.

Cement-based

Our cement based coatings have a natural compatibility with the host concrete and are simple and easy to apply, providing proven solutions at relatively low cost. Tam's products incorporate the latest technologies to prevent shrinkage whilst creating strong waterproof barriers.

They exhibit high resistance to positive and negative water pressure and are ideal for use on foundations, basements, bund walls, reservoirs, water-retaining structures, seawater channels, roofing and tunnels.

Product Range

TamSeal 5
TamSeal 10
TamSeal 10F
TamSeal 800

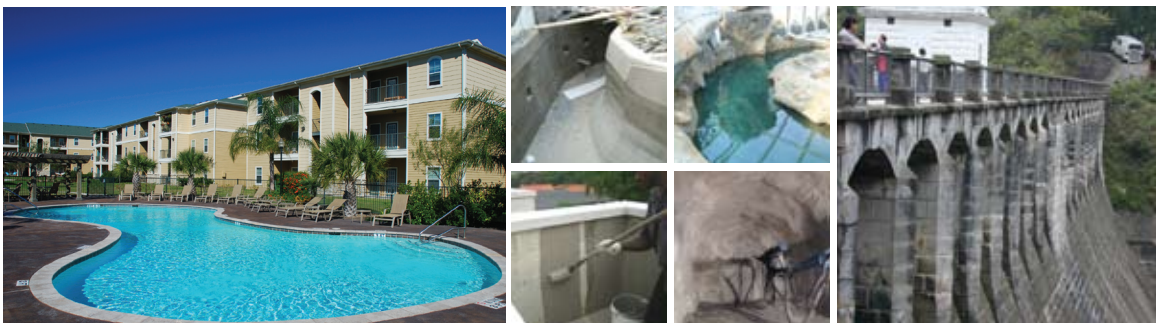
Polymer-based

Some situations demand even tougher products. TAM's polymer range includes bitumen rubber, polyurethane, polyurea and acrylic technologies. These products are designed to provide first-class waterproofing capabilities but also high levels of resistance to specific chemicals, seawater, sewage and water-borne contaminants such as chlorides and sulphates.

Other products in our range provide solar heat resistance and exhibit flexibility and/or elastomeric characteristics to account for the presence of dynamic cracks.

Product Range

TamSeal 22
TamSeal 23
TamSeal 23E
TamSeal EP11
TamSeal HR
TamSeal IM
TamSeal RC
TamSeal 10GM





▷ Sheet Membranes

Sheet membranes are a “tried and trusted” method of protecting and waterproofing large areas of concrete, foundation slabs, retaining walls and tunnels. TAM offers a range of sheet membranes in self adhesive or torch-applied format.

Self adhesive

TamSeal 1500 is a 1.5mm thick, high performance, self-adhesive, rubber bitumen membrane with HDPE backing. It has first-class elongation, puncture and tear resistance, and is intended for use above or below ground and on vertical or horizontal surfaces.

It provides a fully bonded membrane capable of preventing the lateral migration of water within minutes of application.

Product Range

TamSeal 1500

Torch-applied

These membranes are available in 3.0mm or 4.0mm thicknesses. They are APP modified bituminous formulations, incorporating a mineral slate coating mounted on a tough, non-woven polyester mat.

These products are designed for heavy-duty use and exhibit exceptional tensile strength, tear resistance qualities and resistance to water-borne chemicals and UV light. They will prevent the lateral migration of water.

Product Range

TamSeal 3000C

TamSeal 4000E



▷ Water Plugging

The ingress of ground water into basements, foundations, substructures and tunnels is a frequently-encountered problem. It is often necessary to plug running water prior to undertaking long-term remedial works to restore a waterproof environment.

Rapid setting, cement-based compounds

These are durable, single component, fast-setting hydraulic compounds which stop running water and water seepage, and become harder when subjected to constant water pressure.

TamCrete Plug sets in about 70 seconds.

TamCrete PolyPlug is strengthened by the inclusion of reinforcing fibres and polymer. It sets in about two minutes.

Product Range

TamCrete Plug

TamCrete PolyPlug





▷ TAM does much more than waterproof structures

Other TAM products groups



Leak Sealing - polyurethane, acrylic and cement-based systems for water cut-off.



Ground Stabilization - resin and cement-based injection grouts for soil and ground engineering, permeation grouting and void filling.



Concrete Admixtures - for all types and grades of pumped, poured and sprayed concrete construction.



Construction and Repair - cement and epoxy-based mortars and grouts, and electrochemical systems to stop the corrosion of steel reinforcement within 7 days.



Tunnelling and Mining - injection technologies to stop water and consolidate weak or fractured rock and soil geologies.

TAM's joint venture with the Normet Group adds a world-beating range of equipment for concrete spraying, explosive charging and underground logistics to the company's portfolio.



Equipment - specialist high volume spraying and logistical equipment, pumps and accessories.

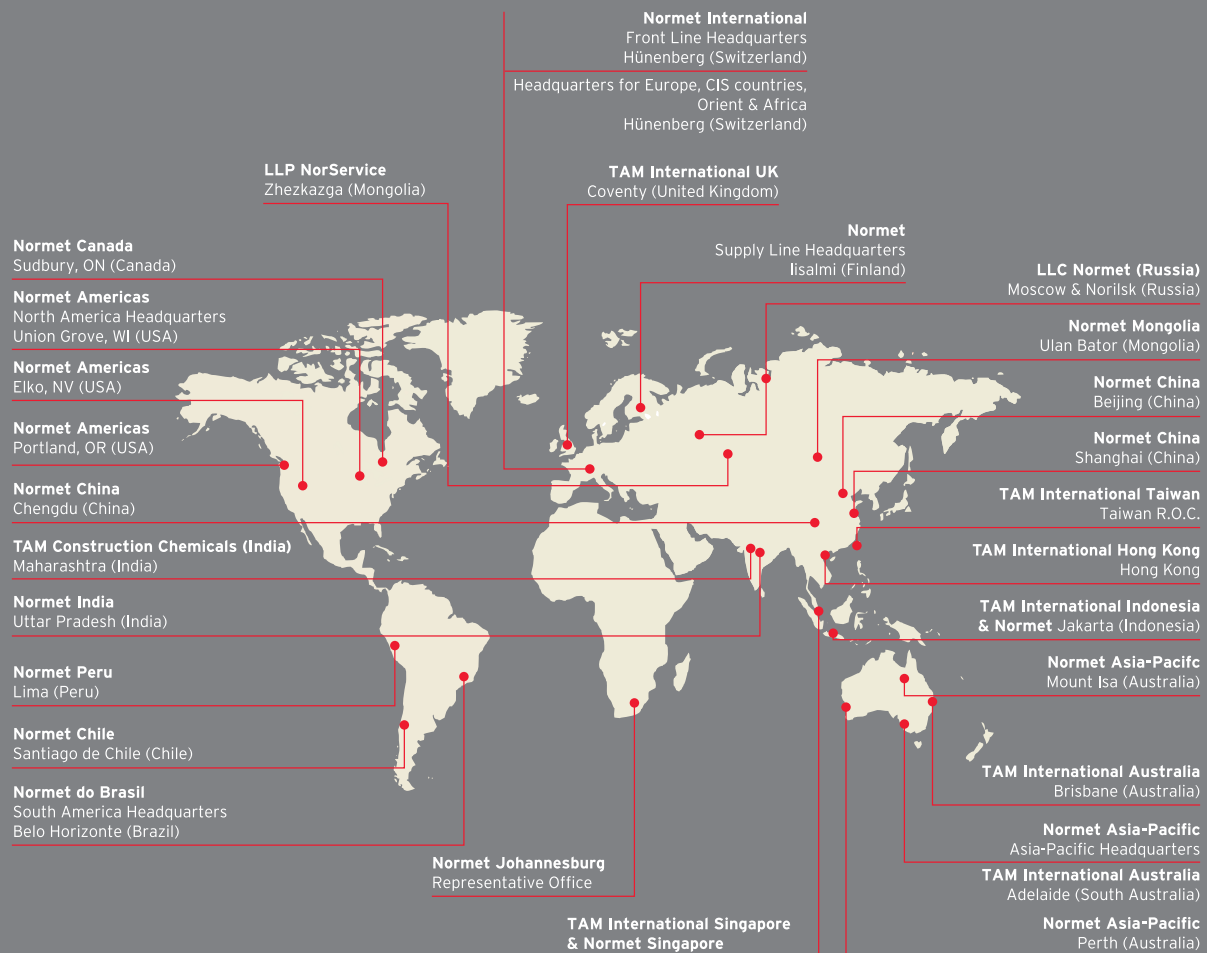
Please ask for more information or visit

www.taminternational.com



Global Construction Chemicals





For your local TAM International representative, visit our website www.taminternational.com



www.taminternational.com